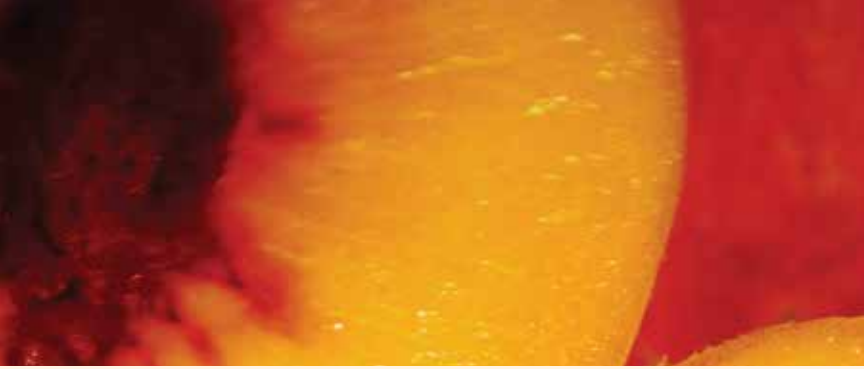




NATURALLY SCIENTIFIC  
—  
PRODUCT GUIDE

RHONDA | Ra | ALLISON®



## WE HAVE BEAUTIFUL SKIN DOWN TO A SCIENCE

---

Like scientists, we look to nature for inspiration. Rhonda Allison Skin Nutrition blends the best of active natural ingredients with highly beneficial, scientifically developed compounds to create superior treatments that will transform the condition of your skin, bringing it to its optimum potential for health and beauty.

It's only natural to want healthier, more youthful skin – and by blending science and nature, it's possible. Since everyone's skin is different, and in fact changes over time, your therapist will create a treatment plan customized just for you.



### HEALTHY-AGING SYSTEM

Science has yet to offer a formula that reverses time, but with Rhonda Allison's Healthy Aging system, it is possible to reduce the visible signs of aging. Biological or intrinsic (internal) aging caused by the passage of time is inevitable; however, we can choose to age with grace and style. Extrinsic (external) aging, which includes such outside influences as sun exposure, pollution, smoking, and allergens, can certainly be controlled. The first step toward preventing and restoring your skin is preparation (cleansing and exfoliation), followed by rebuilding and strengthening (AHAs, retinols, peptides, and ascorbic acid), then nourishing and supporting (antioxidants, growth factors, vitamins, amino acids, and minerals), and finally hydrating and protecting from the environment (moisturizers and sun protection). With preventative care and age management, your skin will look years younger in no time.

---

### SKIN BRIGHTENING SYSTEM

Bring out your skin's natural glow with powerful brighteners that illuminate and balance skin tones. Loaded with pure, high-grade ingredients, these brighteners mean business. All skin types are subject to hyperpigmentation, a condition in which over-stimulation of melanin causes darkened, uneven skin tone. While systemic pigmentation (damage at the cellular level) is difficult to correct, surface pigmentation is dramatically improved with products that will brighten the skin, while protecting it from further damage. Since hyperpigmentation is mostly caused by the sun and heat, use SPF30 sunscreen and try to avoid excessively high temperatures.

---

### ACNE SKIN SYSTEM

It's a scientific fact: 89% of the population experiences acne, with no real cure. However, this disease is treatable with daily care. While there is no medically proven cause, acne may stem from a hormonal imbalance, psychological issues, nutrient deficiencies, and genetics. Acne vulgaris, the most common type of acne, occurs in adolescence. Women, however, often experience hormonal acne in their 20s, and even in their 30s. Both types involve hormones: the onset of hormonal activity at puberty, and imbalanced hormones later in life. Other factors affecting acne include:

**STRESS** – Stress stimulates the adrenal glands, releasing hormones - including testosterone.

**DRYING** – Overuse of drying skin care products may cause the sebaceous glands to produce more oil.

**NUTRITION** – Iodides (salt, processed food, fast food, excessive dairy, soy sauce, and MSG), alcohol, caffeine, and some drugs trigger existing acne conditions.

**EXCESSIVE & ABRASIVE SCRUBBING** – Over cleansing stimulates the production of sebum in the follicle, worsening acne conditions.

**HORMONES** – Hormones stimulate the development of sebaceous follicles and attached oil glands.

**COSMETICS** – Fragrances, dyes, and preservatives irritate sensitive and acne-prone skin.

**PICKING & TOUCHING** – Squeezing ruptures the follicle wall and spreads bacteria, and touching can irritate skin and breed bacteria from hands.

**SKIN IRRITANTS** – Soap powder, fabric softener, shampoo, hair spray, and other products can irritate sensitive skin.



## ULTIMATE EYECARE

### REPLENISH & MOISTEN

Eyes reveal the beauty within – don't let them reveal your age. Rhonda Allison's unrivaled eye products are power packed with advanced active ingredients that diminish fine lines, protect from premature aging, and restore eyes to a soft, youthful, and glow appearance.

## EYES ILLUMINATE

WITH EXOTIC ESSENCE

**MAKE-UP REMOVER** – *Cleansing Gel for Eyes and Face* – Rich in anti-inflammatory and nourishing properties, this cleansing gel gently removes eye make-up and mascara without irritating eyes or skin.

**EYE LIFT** – *Firming Cream* – With fast absorption, this unique wrinkle diminisher firms and renews the eye area for a light lift and a more youthful, rested, brighter appearance.

**PEPTIDE 3-N-1 EYE CREAM** – *Total Eye Care* – This light age-defying eye blend will reduce puffy eyes, brighten tired, dull tissue, and minimize fine lines – giving eyes a boost of moisture.

**EYE REVITALIZER** – *Daytime Eye Refresher* – This silky, cooling cream may be applied to tired eyes at the end of a long day to freshen and brighten them up. Eye tissue immediately feels moist and tightened. Apply under or over make-up morning, noon, or night for a quick perk.

**EYE & LIP REPAIR SERUM** – *Occlusive Wrinkle Minimizer* – This unique and exotic serum melts into delicate eye tissue (above and under eyes), transforming eyes to a more dewy, youthful and softened appearance. Notice a remarkable difference in 30 days of continued use. Watch eyelids become less dry and coarse, and see fine lines diminish.

**MOISTURE EYE TREATMENT** – *Retinol and Lactic Acid Mask* – A nightly moisture eye treatment for home use to lightly exfoliate, repair and regenerate eye tissue.



Make-Up Remover





## CLEANSERS AND SCRUBS

### PURIFY & EXFOLIATE

Most people under cleanse and over moisturize, but in order for skin to accept nutrients it must be squeaky clean. This first step may be the single most important toward healthy skin.

**MAKE-UP REMOVER** – *Cleansing Gel for Eyes and Face* – Packed with age-reducing, tissue-plumping actives, this gentle, all-purpose make-up remover will soothe and refresh your face.

**MILK PLUS** – *Enriched Probiotic Cleanser*  
Natural milk, foaming peptides and yogurt extract gently soothes and cleanses skin - great for sensitive, acne, and aged, thin skin.

**CITRUS GEL CLEANSER** – *All Purpose Daily Wash*  
All skin types will benefit from the foamy essence of Citrus Gel-well suited for sensitive, rosacea prone skin.

**SKIN BRIGHTENING CLEANSER** – *Pigment Support*  
Skin Brightening Cleanser is a moisturizing cleanser that helps brighten aging skin and aid with coloration issues.

**PUMPKIN CLEANSER** – *With Lactic Acid* – A daily cleanser that leaves skin squeaky clean using lactic acid (L) (exfoliation and hydration), pumpkin extracts (digestion and antioxidant support), and beta-carotene (antioxidant and photo protectant).

**BETA GREEN TEA CLEANSER** – *Antioxidant Salicylic Wash* – An all-purpose foaming wash that cleanses and freshens skin thoroughly, reduces surface oils and enhances the cleaning of problematic, sensitive and rosacea-prone skin.

**GLYCOLIC HERBAL WASH** – *Deep Pore Cleanser*  
A daily, herbal based cleanser that leaves skin squeaky clean while AHAs soften skin and reduce surface build-up. A great choice for thicker, more problematic skin.

**ALL PURPOSE CLEANSING PADS** – *Salicylic Wipes*  
Whether used as a second cleanse or quick rinse on the go, All Purpose Cleansing Pads will remove surface residue. An excellent choice for bacteria-prone skin.

**CLARIFYING BEADS** – *All-Purpose Cleanser*  
Clarifying Beads is an emulsifying, exfoliating cleanser with tiny jojoba beads that gently lift and slough surface dirt and debris. Great for all skin types.

**BRIGHTENING SCRUB** – *Buffing Grains* – Brightening Scrub brightens skin tone, exfoliates surface dead cells, and gives skin a deep polish and glowing complexion.

**BETA ACTION SCRUB** – *Sea Algae Granular* – Beta Action Scrub is a natural, effective way to gently remove surface skin cells and build-up and provide antibacterial support, especially for problematic, blemish-prone skin.

**PUMICE WASH** – *Power Scrub* – Micro-beads combined with salicylic acid cause a mild exfoliation while the active ingredient totarol (a natural antibacterial) helps to improve the appearance of thicker, textured, coarse, and oily skin.



POWERFUL EXFOLIATION

---

SMOOTHEST RESULTS



FEED YOUR APPETITE FOR  

---

**BEAUTIFUL SKIN**



## LOTIONS AND TONERS

### BALANCE & STRENGTHEN

A great toner will do what the name implies – get your skin in shape! These phenomenal lotions and toners are enriched with nutrients to deliver valuable benefits for all skin types.

**CUCUMBER SPRITZ** – *Hydrating Spray* – For a “cool as a cucumber” sensation. An all-natural face and body spray that gives skin a drink of water. The perfect travel companion.

**PURIFYING LOTION** – *Antioxidant Toner* – This refreshing, soothing lotion is a potent antioxidant concentrate, beneficial for all skin types.

**NATURAL LIFT TONIC** – *Mist Infusion* – A skin-firming toner ideal for all skins, even blemished, that provides natural moisture for skin challenged with loss of elasticity.

**PUMPKIN RINSE** – *Pro Collagen Toner* – Pumpkin Rinse is a valuable second-phase cleanser for ultra-sensitive to normal, combination skin types. This unique blend has antioxidant, humectant, and nourishing benefits.

**BRIGHTENING PIGMENT LOTION** – *Illuminating Toner* – Key brightening agents are partnered with balancing and building nutrients to support skin during the cleansing phase and to assist in brightening skin tone.

**BETA GREEN TEA LOTION** – *Antioxidant Salicylic Toner* – Beta Green Tea Lotion is the ideal skin toner to balance oil, provide antioxidant support, and offer purifying benefits for normal to oily, and acne-prone skin.

**RASPBERRY LOTION** – *Phytonutrient Toner* – This all-natural, refreshing after-cleanse lotion is supportive for many skin types with its synergistic blend of antioxidants and rejuvenating acids; reduces a shiny appearance due to over-active oil glands.

**FRUIT ACID BOTANICAL** – *Alpha-Beta Toner* – A potent rejuvenation lotion that controls sebum production and benefits thick, acne-prone skin.



*Raspberry Lotion*





## ENZYMES AND MASKS

### RENEW & PAMPER

Unmask your skin's potential with Rhonda Allison's enzymes and masks – concentrations of superior ingredients to balance, purify, clarify, strengthen, and moisturize.

**DERMA PEEL** – *Papaya Exfoliant* – The papaya and pineapple gel-based enzyme has a unique ability to liquefy and then bond together to form a natural granular exfoliation that leaves skin soft, polished, and refreshed.

**PAPAYA TANGERINE ENZYME** – *Milk Enriched Exfoliant* – A gentle mixture of papaya, tangerine and milk protein that softens and smoothes skin, leaving it polished, silky, and hydrated. Great to blend with other enzymes and masks.

**CHERRY JUBILEE ENZYME** – *Phyto-Nutrient Peel* – The primary benefit of this enzyme is the natural polyphenols (flavonoids) that are incredibly rich in antioxidants, providing potent pro-youth benefits. It fights against free-radical damage and aids in building healthy looking skin tissue.

**PUMPKIN PARFAIT ENZYME** – *Pro Collagen Support* – This weekly enzyme is perfect for normal to oily skin. The active fruit enzymes polish and buff the skin leaving it bright, smooth and glowing.

**SKIN BRIGHTENING ENZYME** – *Pigment Paste* – An active enzyme boosted with brighteners that soften and brighten skin. Especially beneficial for dull, uneven skin tone.

**MILK MASK** – *Vitamin and Protein Enriched Cream* – Milk Mask is a vitamin and pure-milk protein mask that offers essential nutrients for the skin. All skin types will respond to the cooling and calming effects of this creamy essence.

**GRAPE SEED PARFAIT MASK** – *Weekly Antioxidant Therapy* – Grape Seed Parfait Mask is a whipped blend of grape seed extracts and essential oils. Besides giving skin much-needed antioxidants, it leaves skin fresh and soft.

**CHOCOLATE ANTIOXIDANT MASK** – *Stimulating Replenish Cream* – With its pleasant scent of chocolate and stimulating sensation, Chocolate Antioxidant Mask delivers nurturing, revitalizing, replenishing and rejuvenating benefits to depleted skin. Provides antioxidant support for all skin types.



*Derma Peel*



## NOURISHMENT

FOR SKIN INDULGENCE



HAS YOUR SKIN HAD ITS

VITAMIN C TODAY?

**NATURAL LIFT MASQUE** – *Protein Toning Powder*  
Natural Lift Masque is a setting/tightening mask that provides intense stimulation for facial muscles, improving the appearance of sagging skin and scarring.

**WASABI MASK** – *With Green Tea* – Skin will wake up and jump into action with the support of this stimulating wasabi and green tea mask that provides antioxidant support, purifying benefits and much-needed hydration. Especially beneficial for sluggish, problematic and rosacea skin.

**PERFECTION CLAY** – *Blemish Sulfur Mask*  
A therapeutic detox mask that tightens and tones while supporting the healing of acne lesions, balancing excess oil, smoothing coarse texture, and refining pores.



## CORRECTIVES

### CORRECT & REBUILD

Whatever your skin challenge – whether acne, premature aging, dry skin, discoloration or darkened skin – look to Rhonda Allison Correctives for the solution – offering an expansive selection of serious actives for impressive results.

**NATURALÉ MEGA BRIGHTENING SERUM** – *Potent Pigmentation Support* – With natural plant extracts and herbs for serious skin brightening and maintenance, this potent non-hydroquinone formula provides antioxidant and moisturizing support for fallow complexions.

**SKIN BRIGHTENING GEL** – *Pigment Serum*  
Skin Brightening Gel is a fast and effective way to brighten skin tone, gently exfoliating while supplying antioxidant support.

**C-PEPTIDE COMPLEX** – *Super Antioxidant*  
C-Peptide Complex combines the antioxidant support of ascorbic acid with an active blend of our collagen-boosting peptide for rejuvenating benefits. A must for every skin.

**MANDELIC ARGININE SERUM** – *The Gentle Rejuvenator* – This corrective serum rejuvenates and balances skin, minimizing excess oil and paving the way for healthy looking skin. Suitable for all skin types, especially rosacea-prone skin.

**ORGANIC A COMPLEX** – *Retinol Stem Cell Serum*  
This unique blend of retinol, organic stem cell technology and organic veggies and herbs lends a gentle, yet potent approach to healthy skin and a flawless complexion with skin renewal and strengthening benefits.

**RETINOL SUPREME** – *Potent Skin Rejuvenation*  
Perfectly balanced to strengthen the skin, this super-charged serum works deep into the skin for maximum skin rejuvenation support – texture, fine lines, and overall appearance improve dramatically.

**CHRONOPEPTIDE A** – *24-Hour Retinal Serum*  
With an encapsulated retinal, ChronoPeptide A uses intelligent ingredients that perform beyond expectation. Offering 24-hour pro-youth benefits for brighter, firmer, more toned skin and rejuvenation. All skin types will benefit, especially photo-aged, acne-prone and sensitive skin.

**SKIN SMOOTHING GEL** – *Alpha Hydroxy Acid Complex* – A silky, firming AHA polymer gel that is effective against acne, reducing the signs of aging, minimizing pores, increasing circulation, and improving overall appearance of skin.

**SKIN REFINE GEL** – *Salicylic Acid Complex*

Rejuvenating and corrective home care for blemished, problematic skin. Skin Refine Gel is a light, fast absorbing gel that assists in diminishing discoloration and balancing impure skin.

**SALICYLIC SERUM** – *With Retinol* – A great overall rejuvenator and skin strengthener with pro-youth results. Especially beneficial for AHA sensitive, rosacea, acne-prone and oily skins.

**BLEMISH SERUM** – *With Totarol* – A blend of natural ingredients that support problematic skin gently and effectively, enhancing purity and clearing of blemishes.

**BLEMISH COMPLEX** – *BPO Rx* – A paraben-free, benzoyl peroxide ally against acne lesions, it clears blemishes while leaving skin looking healthy.



## SERUMS

### REJUVENATE & RESTORE

Begin a skin metamorphosis with exquisite serums that are loaded with beneficial growth factors, vitamins, antioxidants, and peptides, which enhance collagen production and support skin rejuvenation.

**SEA GEMS** – *Mitochondria Complex with Stem Cell* – Refines the skin's appearance for a pro-youth look and vibrant glow. Studies have shown plant stem cell technology to enhance mitochondrial abilities and stimulate new cell growth for younger looking skin.

**ANTIOXIDANT COMPLEX SERUM** – *Daily Firming Lotion* – This serum may be used on all skin types, even acne, providing a powerful boost of antioxidants and instant firming and toning. With regular use skin looks healthier and stronger.

**PUMPKIN E SERUM** – *Vital Nutrient Oil* – A silky, velvety super serum that supplies skin with potent antioxidants and valuable hydration for depleted, lifeless skin.

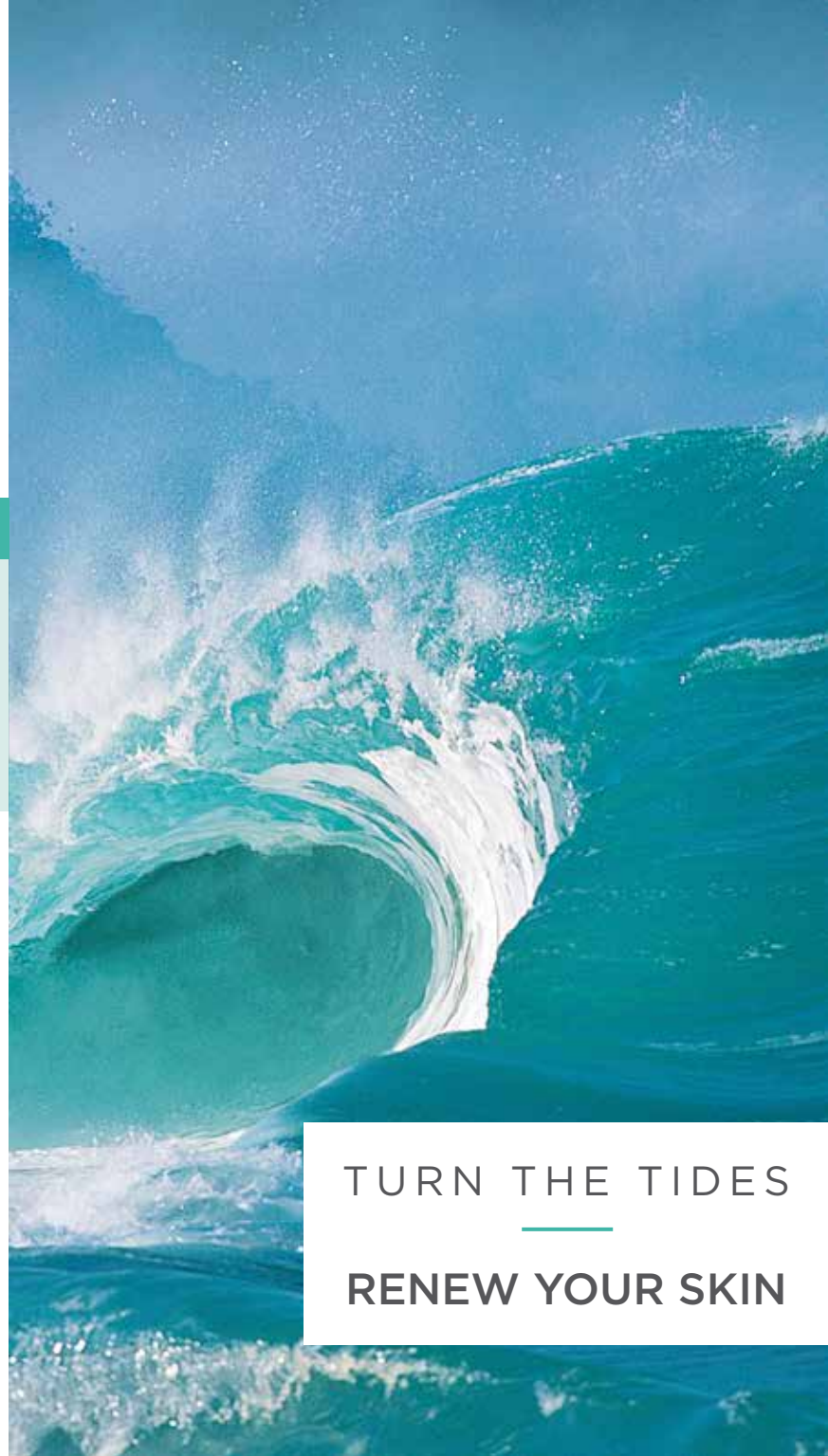
**THERAPY E SERUM** – *Vitamin E Essential* – A light serum that glides easily onto skin and absorbs quickly. It's an antioxidant super star that provides soothing, moisturizing benefits.

**HYALURONIC SERUM** – *Liquid Moisture Drops*  
The "water essence" of hyaluronic acid provides skin essential hydration and aids in trapping moisture for plump, supple skin.

**MULTI-VITAMIN COMPLEX (MVC) SERUM** – *Nutrient Concentrate* – Blends essential vitamins (B, C, E, & K) with potent building extracts for a unique skin serum that nourishes, soothes, hydrates, and strengthens for vibrant, dewy skin.

**ROSACEA SERUM** – *Sensitive Skin Complex*  
This highly specialized serum supports inflamed, irritated, infection-prone skin while providing a high degree of environmental protection. Sensitive skin also benefits from this unique formula, relieving the signs of facial redness and burning. Good for all skin types.

**SATIN PEPTIDE** – *Skin Primer* – Satin Peptide is a silky blend of collagen building peptides, antioxidants, resveratrol and a mitoprotect complex that melts into the skin to assist in rebuilding and strengthening for a more youthful appearance.



TURN THE TIDES  
RENEW YOUR SKIN



**AMINO PEPTIDE SERUM** – *Collagen Boosting Complex* – Amino Peptide Serum delivers the benefits of age-defying peptides including our unique “freezing” peptide and “wrinkle-reducing” peptide for a pro-youth look. May be used as a daily moisturizer.

**PEPTIDE 38** – *Beauty Cocktail* – Reversing the signs of aging and keeping fine lines at bay, this peptide filler will instantly make skin feel plumper while wrinkle-reducing peptides smooth and hydrate skin.

**GRAPE SEED HYDRATING SERUM** – *Antioxidant Concentrate* – Grape Seed Hydrating Serum is a concentrate of pure grape seed extract and essential oils. The natural aroma and light, airy feel creates a very pleasant experience while supplying necessary antioxidant support and essential moisture.

**HYDRA COMPLEX SERUM** – *Skin Cocktail* – Hydra Complex Serum is a light, all-natural, nutritious day and/or night cocktail for the skin. Skin will welcome the antioxidant support this light serum offers.

**GROWTH FACTOR SERUM** – *Visible Renew* – Expediting healthy looking skin, Growth Factor Serum assists in strengthening the skin and balancing moisture while protecting from free-radical damage. The silky, warm sensation soothes and nurtures skin for day and night protection and skin rejuvenation.

**GROWTH FACTOR SERUM PLUS** – *Skin Renewal Complex* – This is an elegant formula designed to restore strength and vitality to thinned, sensitive, aging skin and will renew and fortify skin to promote wrinkle reduction.



## MOISTURIZERS AND POST CARE

### REVITALIZE & NOURISH

Our moisturizers will really get under your skin – in a good way! Rhonda Allison’s luxurious creams go into the skin to plump and hydrate while treating skin all day long.

**ELITE eEGF** – *Enriched Moisturizer* – Elite eEGF cream is a superior blend of growth factor, peptides and antioxidants that provides the ultimate in skin rejuvenation. This is one of the most powerful creams anywhere for stimulating the appearance of repair, collagen synthesis, and strengthening benefits for skin.

**DROP OF ESSENCE HYDRATION DROPS** – *Essential Moisture Serum* – Drop of Essence Hydration Drops is a silky, soothing EFA serum that absorbs quickly into skin providing valuable hydration and tissue support, slowing down the signs of aging.

**MOISTURE AU LAIT** – *Protein Enriched Cream* – Nourishing and hydrating for sensitive to combination skin types. Moisture Au Lait is a light, fast-absorbing day and night protection cream. The special blend of natural olive oil, almond oil, vitamins E & A, and milk protein provide a healthy, soothing dose of skin nutrition.

**BLUSHED WINE GEL** – *Antioxidant Moisturizer* – Blushed Wine Gel is a light daytime firming and toning moisture gel. It liquefies and absorbs quickly into the skin making it a great choice for oily and combination skins as well as dry skin.



QUENCH YOUR THIRST FOR  
**RADIANT SKIN**

SKIN BLOOMS WITH  

---

PURE ELEMENTS

**ULTRA HYDRATION CREAM – Water Binding Moisturizer** – This is a rich moisture cream that binds humectants to the skin for superior hydration support.

**EXOTICA RHODIOLA – Luxury Moisturizer** – Exotica Rhodiola is a blend of very exotic, superbly developed specialty extracts that have potent pro-youth properties. Plant growth factors, anti-inflammatories, antioxidants, thickeners, strengtheners, hydrators, humectants, and wrinkle-reducers support all skin types, especially rosacea-prone skin.

**AMINO PEPTIDE MOISTURIZER – Collagen Booster** Amino Peptide Moisturizer is a potent blend of superior peptide complexes, vitamins, and enriched moisture binding ingredients that provide hydration and skin-building support.

**BRIGHTENING CREAM ENHANCED – Luminous Complexion Moisturizer** – Brightening Cream Enhanced, a corrective moisturizer, is a perfect blend of next-generation brighteners, superior conditioners and supportive actives that may be used day and night for luminous skin.

**eZINC PROTECTION CREAM – Face and Body Mineral Emulsion** – The enhanced formula's light, fast-absorbing base contains a powerhouse of antioxidants to help control free radical damage, leaving skin hydrated and protected.

**ALOE MATTE MOISTURE CREAM – Daily Skin Protection** – This daytime protection cream balances excess oil and provides water-binding moisture, leaving a matte finish on skin. The perfect choice for oily, combination skin types.

**PRO SALVE – Occlusive Balm** – Pro Salve is a powerful post-care balm that helps prevent trans-epidermal water loss. Soothing elements form a water-binding seal on skin for optimum protection during peels or other skin trauma.

**ARNICA THERAPY – Post Procedure Cream** Especially beneficial after cosmetic surgeries, peels, laser, and waxing treatments, Arnica Therapy naturally soothes skin and reduces the appearance of swelling and inflammation. Great to use on chapped, traumatized skin and to reduce the appearance of dark circles under the eyes.

**SEA GEMS – Mitochondria Complex with Stem Cell** – Hydrates and helps refine the appearance of skin for a pro-youth look and vibrant skin. May also be used to reduce heat sensations and soothe skin following peels and microdermabrasion.

**POST BALM LUBRICATING OINTMENT – Post Peel Occlusive** – Post Balm creates a soothing and protective barrier on the skin, reduces the appearance of inflammation, soothes itchiness, and supports bacteria-prone skin. It also helps reduce burning sensations, keeps skin lubricated, and aids traumatized skin.

**CALMING SKIN GEL – Hydrocortisone Balm** A soothing emulsion that relieves the appearance of skin irritation, itching, and inflammation. A great choice to use following waxing, peeling, and extractions to calm skin.

**REGENERATING CREAM – Daily EGF Emulsion** This is a cream formula that may be used for many skin types, but especially normal to dry or sensitive skin. It's also an excellent post-peel cream and daily moisturizer for continued cell rejuvenation.

**GROWTH FACTOR GEL – Matte Finish Rejuvenator** – The gel base is an ideal daily moisturizer and protector for oily, acne, impure skin. Soothing skin protectors calm aggrressed and irritated skin, reducing the appearance of damage from free radicals.

**GROWTH FACTOR SERUM – Visible Renew** With a high dose of EGF, this light serum boosts support for dryer skins – a must after any peel treatment. Works with all skin types.



Amino Peptide  
Moisturizer



## PROTECTORS AND FINISHERS

### HYDRATE & PROTECT

With Rhonda Allison Sun Protection, the power to slow aging is in your hands. Consider that sun exposure causes 90% of wrinkling – then consider wearing a sunscreen daily!



**CUCUMBER SPRITZ** – *Hydrating Spray* – For a “cool as a cucumber” sensation, Cucumber Spritz is an all-natural face and body spray that gives skin a drink of water. Moisture binding nutrients freshen and revitalize skin. The perfect travel companion.

**ALOE MATTE MOISTURE CREAM** – *Daily Skin Protection* – A daytime protection and hydration cream, Aloe Matte Moisture Cream balances excess oil and provides water-binding moisture to prevent dehydration. This light, creamy formula is ideal for normal to oily, problematic skin types. Teens especially love it.

**eZINC PROTECTION CREAM** – *Face and Body Mineral Emulsion* – Zinc Oxide makes this formula a highly protective topical. Giving skin much needed protection from the elements, this light cream provides valuable antioxidant benefits and soothing support.

**DAYTIME DEFENSE SPF30** – *Face and Body Protection* – For a refined finish to your daily skincare, Daytime Defense is the perfect protection for all skin types. Using zinc oxide to provide a natural sun barrier, this pure, clean formulation protects the skin while providing antioxidant benefits and soothing support without leaving skin white or pasty.



Daytime Defense  
SPF30

SHIELD AND PROTECT  
—  
BEAUTIFUL SKIN



# PLAN YOUR SKINCARE REGIMEN

---

## ALL PURPOSE SKIN CARE

- Make-Up Remover
- Milk Plus/Citrus Gel Cleanser
- Moisture Eye Treatment
- Clarifying Beads
- Purifying Lotion
- Cucumber Spritz
- C-Peptide Complex
- Amino Peptide Serum
- Hyaluronic Serum
- Hydra Complex Serum
- Rosacea Serum
- Sea Gems
- Derma Peel
- Cherry Jubilee Enzyme/Papaya Tangerine Enzyme
- Milk Mask/Grape Seed Parfait Mask
- Grape Seed Hydrating Serum/MVC Serum
- Blushed Wine Gel
- Regenerating Cream/Growth Factor Serum
- Exotica Rhodiola
- Daytime Defense SPF30

## HEALTHY AGING SKIN CARE

- Milk Plus
- Pumpkin Cleanser
- Pumpkin Rinse
- Natural Lift Tonic/Raspberry Lotion
- C-Peptide Complex
- Organic A Complex/Salicylic Serum
- Retinol Supreme/ChronoPeptide A
- Mandelic Arginine/Skin Smoothing Gel
- Satin Peptide/Peptide 38
- Antioxidant Complex Serum
- Drop of Essence Hydration Drops
- Sea Gems
- Elite eEGF
- Growth Factor Serum Plus
- Cherry Jubilee Enzyme/Pumpkin Parfait Enzyme
- Natural Lift Masque
- Pumpkin E Serum/MVC Serum
- Ultra Hydration Cream
- Eye & Lip Repair Serum
- Peptide 3-N-1 Eye Cream/Eye Lift
- Moisture Eye Treatment
- Daytime Defense SPF30

## SKIN BRIGHTENERS

- Skin Brightening Cleanser
- Brightening Scrub
- Brightening Pigment Lotion
- Skin Brightening Enzyme
- Naturalé Mega Brightening Serum
- Skin Brightening Gel
- Retinol Supreme/ChronoPeptide A
- C-Peptide Complex
- Mandelic Arginine Serum
- Growth Factor Serum/Plus
- Peptide 3-N-1 Eye Cream/Eye Lift
- Moisture Au Lait
- eZinc Protection Cream
- Daytime Defense SPF30

## ACNE BLEMISH & PROBLEM SKIN CARE

- Milk Plus/Glycolic Herbal Wash
- Beta Green Tea Cleanser
- All Purpose Cleansing Pads
- Pumice Wash/Beta Action Scrub
- Raspberry Lotion/Fruit Acid Botanical
- Beta Green Tea Lotion
- Skin Refine Gel
- Salicylic Serum
- Skin Smoothing Gel
- Perfection Clay/Wasabi Mask
- Blemish Serum
- Blemish Complex
- Hydra Complex Serum
- Growth Factor Gel/Serum
- Aloe Matte Moisture Cream
- Moisture Au Lait
- eZinc Protection Cream
- Daytime Defense SPF30



FOR THE BEST IN SCIENCE-BASED SKIN CARE,  
**RHONDA ALLISON**  
PRODUCTS ARE A NATURAL SELECTION.

---

We start with the purest ingredients (never any dyes, colors, perfumes, or additives). Using advanced techniques like the Science of Chirality to get the most from every molecule, our formulas are as effective as possible. These cosmeceutical products are in a category between cosmetics and pharmaceuticals – they are potent and initiate an active change in your skin's condition, so consult a professional to help create the most effective program to suit your skin's individual needs.



RHONDA | Ra | ALLISON®

**RHONDA ALLISON COSMECEUTICALS**

[www.rhondaallison.com](http://www.rhondaallison.com)